



PROFESSIONAL DEVELOPMENT WORKSHOPS

www.impact-education.com.au

OUR VISION

Helping Kids
Love Learning

OUR MISSION

Providing services to...
*Optimise a child's learning and
development enabling them to
reach their full potential.*

OUR VALUES

Children Matter – We *honour and respect* each and every child's journey because we believe that every child matters.

Strive for Excellence – For us, it's all about *exceeding your expectations* by providing services, which not only support you but also inspire and motivate you.

Be Innovative – We are *innovative* and never stop thinking outside the box. Why? Because we aim to continue discovering new ways to improve, create and inspire children to thrive in the world of education.

Collaborate – It *takes a village to raise a child* and we believe that by working together, we really can give a child the best opportunity to succeed.

Act with Integrity – We pride ourselves on our *honesty and integrity*.

Be caring, passionate and make it fun!

OUR APPROACH

We believe in a multi-disciplinary, holistic approach to teaching and learning. This is achieved by looking at the '*whole*' child and focusing on all areas of a child's development: social, emotional, physical and cognitive. Why? Because this ensures we are providing *the most effective building foundations of the brain in order for every child to reach their full potential*.

As a child grows, there can be times when learning challenges or developmental delays become evident. We've all heard the comments, '*They're trying so hard and they still don't get it*' or '*they're not trying hard enough*.' At Impact Education we believe in looking into the reasons *why* they may not be achieving and *how* we can help every child succeed. Understanding the '*why*' behind a problem is the first step to finding solutions.



Natalie Nicholls

Education Consultant & Specialist Teacher

*BEd, PGDip.SpLD, Dip.Neuro.Psych, MEd.CogPsych
(completing)*



”

*Never stop learning
because life never
stops teaching”*

INSPIRING AND PURPOSEFUL TRAINING

Our professional development workshops aim to empower educators to make a significant impact on a child's achievement. Research has shown us that a teachers' depth of understanding, knowledge, strategies and practices has a significant impact on a student's learning outcomes. Engaging teachers in high quality, professional learning is the most successful way to make a difference. We encourage teachers to reflect on, question and intentionally improve their own learning and teaching practice, benefiting themselves and the children they teach.

Our professional development courses and workshops are carefully and creatively crafted to ensure you are equipped with up-to-date research and practical hands-on strategies which you can use immediately in the classroom.

We believe in teaching the whole child, personalising learning and using brain-based strategies – it just makes sense!

This is where our new unique series of workshops support you. We begin each series with **BUILDING** the fundamental foundations, while equipping you with in-depth knowledge and practical application, then we teach you how to **EXPLORE** and identify difficulties and lastly we guide you through practical ways you can **ACCELERATE** by maximising learning opportunities for all children.

Whether you are just starting your journey as a teacher, are looking to further your teaching skills, or move into a leadership role, we are here to support, inspire and challenge you to make an impact on every child in your school!

OUR WORKSHOPS

BUILD

Understanding the Amazing Brain

Learn about the brain, how we learn, what factors affect learning and why some children have learning difficulties.

Play And Its Role in Building Learning Foundations

Learn what effective play-based learning is, the connection between the brain, play and learning and how to create a highly effective play-based learning environment.

Movement, Sensory Development and Learning

The significant impact a child's movement and sensory foundations has on a child's learning and how you can help with brain-based activities.

EXPLORE

Dyslexia Friendly Classrooms

Be immersed in a deep understanding of dyslexia (and other learning difficulties) and how to implement effective strategies to help your students succeed.

Early Identification & Assessment of Learning Difficulties

Be equipped with quick, fun and effective screening tools for individual students, class or the whole school to identify difficulties, early, ensuring NO ONE gets left behind!

ACCELERATE

Units of Sound

Units of Sound is a computer based multi-sensory literacy catch-up program that can be used individually, in the classroom or at home.

Learning Difficulties Intervention Course

This exclusive course is for educators who would like to provide intervention in schools or specialist tuition for children with learning difficulties such as dyslexia.

(Coming Soon!)



UNDERSTANDING THE AMAZING BRAIN

Childhood is a magical time for brain development that we must carefully protect and nurture. As educators we must understand the IMPACT that the brain has on a person's success in school and in life. In order to maximize someone's potential and success, it is important we understand where learning and behavior comes from.

This workshop explores the foundations of the brain. It covers why it is important to understand how the brain affects learning, how the brain learns and the key domains that are central to the brain and its development. You can then use this knowledge to influence a child's development and success.

Early years' educators will highly benefit from this workshop, as well as teachers and practitioners of all age groups who will value the knowledge and activities to support a child to learn more effectively.

The aim of the workshop is for you to develop a deep and practical understanding of the brain and learning.

Workshop Outline:

- How we learn
- What factors affect learning
- Why some children have learning difficulties
- Effective brain-based teaching strategies.

This workshop will be presented by experts in their field with hands-on practical activities throughout the workshops.

An essential workshop for all passionate teachers who want to maximise learning for all children they teach.

PLAY AND ITS ROLE IN BUILDING LEARNING FOUNDATIONS

Foundations to Literacy and Numeracy

Kindy to Year 2

Learn how to create a highly effective play-based learning environment on any budget!

All brilliant educators want to ensure they are providing the most effective environment to maximise children's learning, but many of us are not aware of how much or little influence the learning environment will have on a child's development. To maximise the effectiveness of using an evidence-based play pedagogy, it must be done correctly. Is your learning environment set up to maximise learning or could it be improved?

You will be shown the foundations of a rigorous play-based learning environment in early childhood education that is brain-based and meets curriculum requirements!

This workshop is for those who are committed to educating the needs of the whole child.

*Bonus material:
How and where to source materials and resources on a low budget!*

You will leave this course, feeling confident in knowing how to create and evaluate an effective play-based learning environment. We will provide you with helpful resources, equipment, checklists and more!

Includes Play-Based Learning Handbook & Personal Play-Based Learning Journal



DAY 1

Workshop Outline:

- The brain, play and learning
- Play and its role in building learning foundations required for literacy and numeracy
- What does an effective play environment look like?
- The consequences of lack of play on learning

DAY 2

Workshop Outline:

- Designing an engaging learning environment that caters for the development of the whole child and caters for all learning needs
- Provocations and Scaffolding
- Evaluating your learning environment

OPTIONAL TOURS

Reggio Emilia Inspired Learning Environment
Walker Learning Inspired Learning Environment



MOVEMENT, SENSORY DEVELOPMENT & LEARNING

Every Child Deserves the Best Start to Learning

This workshop will empower you with the knowledge, skills and tools to maximise every child's ability to learn effectively.

Do you know the impact that a child's motor and sensory development has on learning? From birth, our brain and body are growing in response to the environment around us. Children can have incomplete developmental stages for the first seven years, which affects their ability to learn effectively. When a child's brain directs the body to perform any motor task, such as reading or writing, it requires adequate functioning of the sensory system. Delays and immaturities, in most cases, are eventually diagnosed as a learning difficulty. Research has shown that early intervention and support is the most effective.

Join us at this evidence-based, outstanding workshop and give the children you teach the best learning foundations.

Workshop Outline:

- The connection between the brain, body and learning
- Sensory development and its impact on our ability to learn
- Identifying delays and immaturities in children and what you can do to help
- Implementing programs and activities to optimise learning abilities.

This workshop will be presented by experts in their field with 'hands-on' practical activities.



DYSLEXIA FRIENDLY CLASSROOMS

We've all heard of dyslexia, but do we know exactly what it is and how to address it? Children with dyslexia 'learn differently.' In order for a child to learn effectively, we must know 'how' they learn and 'how' to create the optimum learning environment.

Approximately 10% of the population has dyslexia. Many of these children are 'failing' and being left behind year after year. Research has shown that by using evidence-based strategies and creating a dyslexia friendly learning environment, ALL children have the opportunity to learn effectively and succeed.

It's heartbreaking witnessing anyone struggling with areas of literacy and/or numeracy that others just 'seem' to get.

Join us at this workshop to see how YOU can create a dyslexia friendly learning environment. You will not only raise the potential of all of your students, but help dyslexic pupils succeed.

Workshop Outline:

- Identifying, planning and tailoring to the needs of a pupil with dyslexia
- Marking, assessments and policies to accommodate dyslexic pupils
- Evidence-based intervention and proven teaching strategies
- Resources, templates and checklists

As teachers, we have a big responsibility, to ensure that every child has the skills to lead successful and productive lives. Be empowered with the knowledge to help children with learning challenges achieve their full potential.



A brilliant workshop for every passionate teacher.

EARLY IDENTIFICATION & ASSESSMENT OF LEARNING DIFFICULTIES



Be equipped with quick, fun and effective screening tools for individual students, class or the whole school to identify difficulties, early, ensuring NO ONE gets left behind!

Do you know how to identify a learning difficulty? Increase your skills and confidence by being equipped with expert knowledge and easy to use screening tools to identify dyslexia, dyspraxia, dyscalculia, auditory processing, sensory processing and visual processing disorders.

Why learn this? Too many children are falling through the gaps. Early identification means a child has a better chance of receiving support to help them overcome and lessen the impact the difficulty has on their learning.

Day 2 of the workshop is available to Learning Support Teachers, Literacy Tutors, Occupational Therapists, Speech Therapists etc. You will learn from experts how to use and interpret standardised tests results to investigate the underlying skills needed to make progress in learning.

Standardised tests offer a reliable way to benchmark a student's performance before intervention and a reliable way to assess the impact the intervention has or has not made. The results provide guidance as to whether the IEP needs altering to ensure the child is not falling further behind. Using standardised tests over time allows progress to be tracked in an efficient way. This can apply to testing an individual twice yearly. Before we use standardised tests, we must be confident in using and interpreting results to ensure they are producing the most accurate results.

You will leave the workshops knowing how to identify a learning difficulty, what screening or assessment tools to use and what to do next!

Bonus material:

Screening tools and templates.

DAY 1

Workshop Outline:

- What does a learning difficulty 'look' like?
- Informal and formal screening tools for individual, class & whole school.
- Hands-on practice session on using and identifying LD.

DAY 2

Workshop Outline:

- Background in standardised testing - what, when and why?
- How to perform standardised tests correctly
- Leading standardised tests
- Using & interpreting results

UNITS OF SOUND

Literacy for Life



Do you have children who are falling behind in literacy and you don't have the time, resources or skills to help them catch up?

Units of Sound is a brilliant multi-sensory literacy intervention program you can use on-line. It can be used individually, in the classroom or throughout the whole school!

The program Units of Sound was developed by the leading dyslexia organisation in England, Dyslexia Action. It is structured, cumulative and multi-sensory and based on the evidence-based Orton-Gillingham method. This has proven to be a highly effective literacy intervention program for dyslexics or anyone who needs to catch-up on literacy.

It is suitable for children age 7 to adult. Children who require earlier skills, can 'catch-up' using the Active Literacy Kit (ALK), which connects later with Units of Sound.

This outstanding program can be used individually or in groups during class or support time. Any teacher, teacher assistant or parent can learn how to use the program and start straight away!



This program is individualised to each pupil and covers reading, spelling, memory and dictation activities. It is a brilliant program children can use in the classroom to help fill-in-the-gaps in their learning.

Throughout this 2 day course, we will equip you with the skills required to implement this program with individual pupils or your whole class immediately.

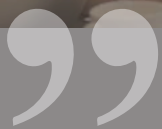
How does it work?

- Firstly, the pre-test puts the child on the right level for reading, spelling, memory and dictation.
- The program has three stages from CVC words to multisyllabic words.
- It is based on auditory and visual patterns for reading and spelling.
- A key principal that underpins Units of Sound is the revisiting or repetition of sounds and words to secure learning.
- Children can record their own voices, listen back and self-correct.





PROFESSIONAL DEVELOPMENT IN-SERVICE



Never stop learning because life never stops teaching”

All children have the ability to succeed, but the level of success depends on a teachers’ depth of understanding, knowledge, strategies and practices. Research has shown that engaging teachers in high quality, professional learning is the most effective way to make a difference in a child’ s learning.

No child should be left behind. We have put together a selection of evidence–based training workshops which are designed to teach your staff not only how to recognise a learning difficulty, but practical strategies you can implement in the classroom and throughout the school to ensure a child does succeed.

Our professional development workshops are uniquely customised to your school's needs and can be held after school, half days or full days. Training packages are also available. Please see below for the exclusive workshops held at your school – book early!

We believe in teaching the whole child, personalising learning and using brain–based strategies – it just makes sense!

Dyslexia (& Other LD) Friendly Schools

Learn exactly what a LD is, how to identify them and why at least 10% of children find learning a real challenge & what you can do about it.

Early Identification of Learning Difficulties

Be equipped with quick, fun and effective screening tools for individual students, class or the whole school to identify difficulties, early, ensuring NO ONE gets left behind!

Units of Sound Training

Units of Sound is a computer–based multi–sensory literacy catch–up program, from the UK, that can be used individually, in the classroom or throughout your whole school!

Mastering IEP's

Did you know that the effectiveness of an IEP can determine how much progress a child will or will not make? Learn from experts on how to write and implement an effective IEP.



Impact Education Pty.Ltd

www.impact-education.com.au
hello@impact-education.com.au
PO Box 670, South Perth, WA 6951